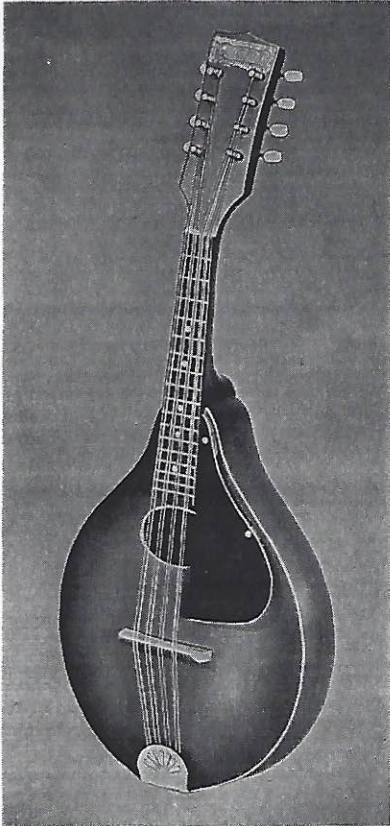


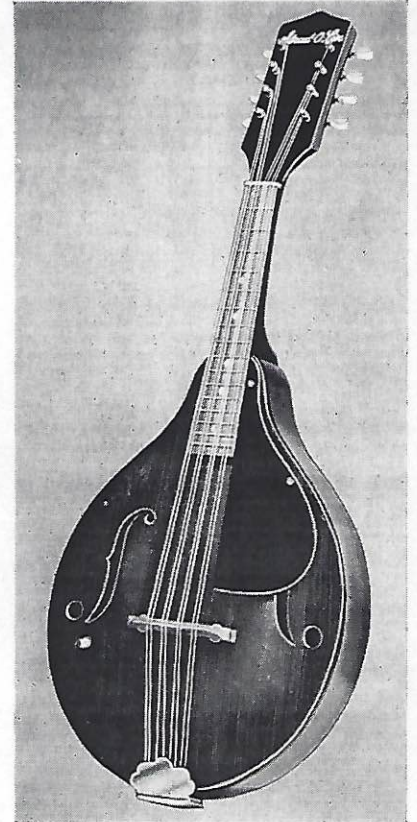
# MANDOLINS



No. 660



No. 850



No. G10

## SERENADER

**No. 660 SERENADER MANDOLIN**—Arched top and back, round-hole sound-hole. Shaded red brown dull mahogany finish. Raised rosewood extension fingerboard with five position dots. Rosewood bridge, black celluloid raised guard plate, nickel plated tailpiece. White button machines .....Each

**\$20.00**

## STRAD-O-LIN

**No. 850 STRAD-O-LIN MANDOLIN**—Genuine mahogany top, back and sides. "F" hole soundholes. Striped top edge. Arched top and back. Raised rosewood extension fingerboard with five position dots. Shaded brown mahogany finish. Rosewood adjustable bridge. Raised black celluloid guard plate. Nickel plated tailpiece. White button machines .....Each

**\$25.50**

**No. G10 STRAD-O-LIN MANDOLIN**—Selected mahogany. Arched top and back. Dark mahogany shaded finish throughout. Black striped top and bottom edges. Black celluloid raised guard plate. Raised extension rosewood fingerboard with five position dots. Rosewood adjustable bridge. Two-piece nickel plated tailpiece. "F" hole sound-holes .....Each

**\$30.00**

**No. G11 STRAD-O-LIN MANDOLIN**—Same general description as the No. G10 but with natural white spruce top .....Each

**\$30.00**

**No. G15 STRAD-O-LIN MANDOLIN**—Violin arched selected curly maple back, solid spruce arched top. "F" hole sound-holes. Dark mahogany shaded finish body. Natural white top. Black striped top and bottom edges. Large black raised pick guard. Raised extension rosewood fingerboard with five position dots. Rosewood adjustable bridge. Two-piece highly nickel plated tailpiece .....Each

**\$30.00**



Nos. G11 - G15